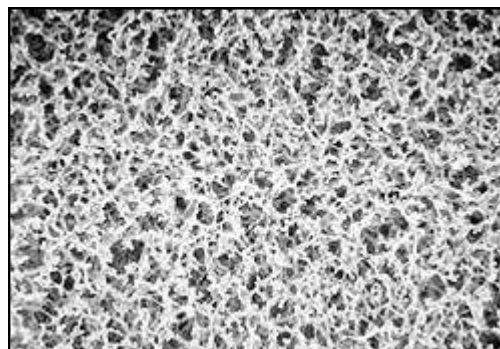


## Nitrocellulose (Mixed Esters - ME) Membranes

Nitrocellulose - Mixed Esters (ME) - unsupported filters are composed of a mixture of inert cellulose nitrate and cellulose acetate polymers. The uniform microporous structure of these filters provides the fastest flow rates and highest throughputs available in a membrane filter. Because they are biologically inert, Nitrocellulose filters are ideal for a wide range of clarification, sterilization, and analytical applications such as: microbiological analysis, clarification or sterilization of aqueous solutions, industrial hygiene applications, silt density index (SDI - 0.45µm, 47mm) and particulate-matter analysis. For gravimetric analysis using ashing techniques, Nitrocellulose filters yield a residue of less than 0.045% of their initial weight. They are hydrophilic with a noncytotoxic wetting agent extractable level of less than 4% of their weight.



Features	Typical Applications
<ul style="list-style-type: none"> <li>Hydrophilic for aqueous clarification and particulate capture</li> <li>Consistent high flow rate for faster filtration</li> <li>Uniform pore structure for selectivity</li> <li>Hydrophilic, inert cellulose nitrate</li> <li>High binding capacity</li> <li>Manufactured thickness within 10 microns</li> </ul>	<ul style="list-style-type: none"> <li>Aqueous filtration</li> <li>Microbiological analysis</li> <li>Sterility testing</li> <li>Gravimetric analysis with ashing technique</li> <li>Particulate analysis</li> <li>Black - food and beverage</li> </ul>

Specifications	
<b>Sterilization</b>	Gamma Irradiation, Ethylene Oxide (EtO), Autoclaving or Live Steam
<b>USP Class VI Testing</b>	Passed
<b>Thickness</b>	150 µm +/- 10 um
<b>Extractables</b>	<4%
<b>BSA Protein Binding</b>	Approx. 160 µg/cm <sup>2</sup> (depending on pore size)
<b>Maximum Operating Temperature</b>	180° C (356° F)
<b>Sealing Compatibility</b>	Ultrasonic, Heat, Radio Frequency and Insert Molding
<b>Wicking Rate</b>	**Time required for an aqueous solution to travel 4 cm. 5.0 µm - 200 sec. 8.0 µm - 120sec., 15.0 µm - 70 sec.
<b>Pore Size Range</b>	0.1 to 15 µm

Ordering Information	
Description	Part Number
13mm 0.02um NC Filter Membrane. 100 Pack	<b>NC0213</b>
13mm 0.45um NC Filter Membrane. 100 Pack	<b>NC4513</b>
25mm 0.02um NC Filter Membrane. 100 Pack	<b>NC0225</b>
25mm 0.45um NC Filter Membrane. 100 Pack	<b>NC4525</b>
47mm 0.02um NC Filter Membrane. 100 Pack	<b>NC0247</b>
47mm 0.45um NC Filter Membrane. 100 Pack	<b>NC4547</b>
90mm 0.02um NC Filter Membrane. 25 Pack	<b>NC0290</b>
90mm 0.45um NC Filter Membrane. 25 Pack	<b>NC4590</b>
142mm 0.02um NC Filter Membrane. 25 Pack	<b>NC02142</b>
142mm 0.45um NC Filter Membrane. 25 Pack	<b>NC45142</b>

